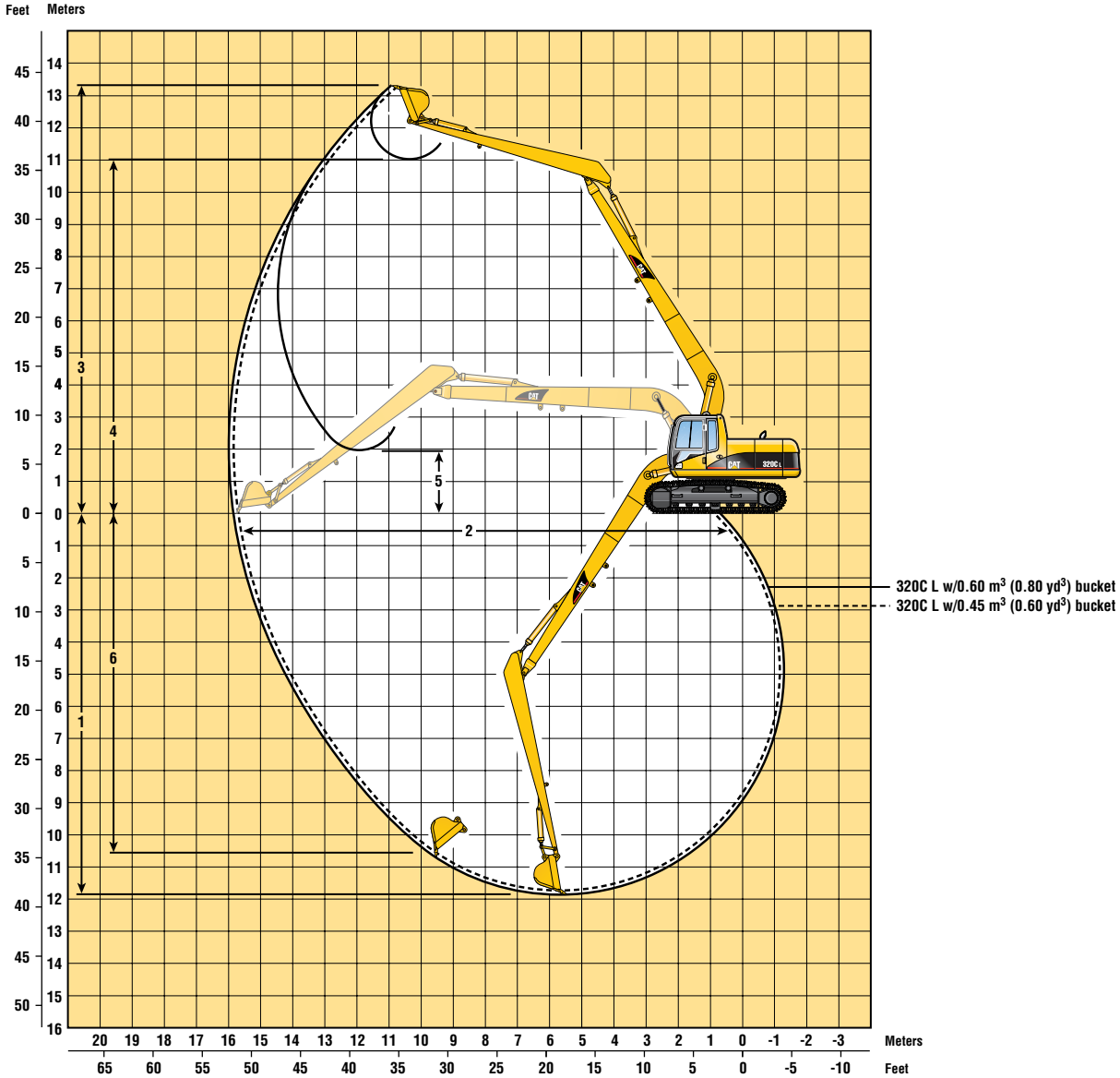


Long Reach Excavator Working Ranges



Arrangements	320C L SLR 0.45 m ³ (0.60 yd ³) Excavation	320C L SLR 0.60 m ³ (0.80 yd ³) Ditch
1 Maximum Digging Depth	11.88 m (39'0")	11.75 m (38'7")
2 Maximum Reach at Ground Level	15.72 m (51'7")	15.59 m (51'2")
3 Maximum Cutting Height	13.29 m (43'7")	13.23 m (43'5")
4 Maximum Loading Height	11.01 m (36'1")	11.14 m (36'6")
5 Minimum Loading Height	1.97 m (6'6")	2.09 m (6'10")
6 Maximum Vertical Wall Digging Depth	10.7 m (35'1")	11.31 m (37'1")
Bucket Digging Force (ISO)	60 kN (13,500 lb)	60 kN (13,500 lb)
Stick Digging Force (ISO)	46 kN (10,300 lb)	46 kN (10,300 lb)
Bucket Digging Force (SAE)	54 kN (12,100 lb)	60 kN (13,500 lb)
Stick Digging Force (SAE)	46 kN (10,300 lb)	46 kN (10,300 lb)

Major Component Weights

Booms: including lines, boom cylinders, stick cylinders and left side light

	kg	lb
Boom	2180	4800

Sticks: including bucket cylinder and bucket linkage

Stick	1600	3520
-------	------	------

Counterweight	4830	10,630
---------------	------	--------