

SPECIFICATIONS



ENGINE

Model Komatsu SAA6D102E-2
 Type Water-cooled, 4-cycle, direct injection
 Aspiration Turbocharged and air-air aftercooling
 Number of cylinders 6
 Bore 102 mm **4.02"**
 Stroke 120 mm **4.72"**
 Piston displacement 5.88 ltr **359 in³**
 Power rating (*SAE J1995 conditions)
 *Gross **150 HP** 111.9 kW @ 1950 rpm
 Flywheel **143 HP** 106.6 kW @ 1950 rpm
 Governor All-speed control, mechanical
 Meets 2001 EPA emission regulations, EPA Tier 2 emission ready.



HYDRAULICS

Type HydraMind (Hydraulic Mechanical Intelligence New Design) system, closed-center system with load sensing valves and pressure compensated valves
 Number of selectable working modes 4
 Main pump:
 Type Variable displacement piston type
 Pumps for Boom, arm, bucket, swing, and travel circuits
 Maximum flow 428 ltr/min **113 U.S. gal/min**
 Supply for control circuit Self-reducing valve
 Hydraulic motors:
 Travel 2 x axial piston motor with parking brake
 Swing 1 x axial piston motor with swing holding brake
 Relief valve setting:
 Implement circuits 37.3 MPa 380 kgf/cm² **5,400 psi**
 Travel circuit 37.3 MPa 380 kgf/cm² **5,400 psi**
 Swing circuit 28.9 MPa 290 kgf/cm² **4,125 psi**
 Pilot circuit 3.2 MPa 33 kgf/cm² **470 psi**
 Hydraulic cylinders:
 (Number of cylinders – bore x stroke x rod diameter)
 Boom 2–130 mm x 1334 mm x 90 mm **5.1" x 52.5" x 3.5"**
 Arm 1–135 mm x 1490 mm x 95 mm **5.3" x 58.7" x 3.7"**
 Bucket 1–115 mm x 1120 mm x 80 mm **4.5" x 44.1" x 3.2"**



DRIVES AND BRAKES

Steering control Two levers with pedals
 Drive method Hydrostatic
 Maximum drawbar pull 178 kN 18200 kg **40,120 lb**
 Gradeability 70%, 35°
 Maximum travel speed:
 High 5.5 km/h **3.4 mph**
 (Auto-Shift) Mid 4.1 km/h **2.5 mph**
 Low 3.0 km/h **1.9 mph**
 Service brake Hydraulic lock
 Parking brake Mechanical disc brake



SWING SYSTEM

Drive method Hydrostatic
 Swing reduction Planetary gear
 Swing circle lubrication Grease-bathed
 Service brake Hydraulic lock
 Holding brake/Swing lock Mechanical disc brake
 Swing speed 12.4 rpm



UNDERCARRIAGE

Center frame X-frame
 Track frame Box-section
 Seal of track Sealed track
 Track adjuster Hydraulic
 Number of shoes (each side): 45
 Number of carrier rollers 2 each side
 Number of track rollers (each side): 7



COOLANT AND LUBRICANT CAPACITY (REFILLING)

Fuel tank 400 ltr **105.7 U.S. gal**
 Coolant 22.4 ltr **5.9 U.S. gal**
 Engine 24.0 ltr **6.3 U.S. gal**
 Final drive, each side 4.5 ltr **1.2 U.S. gal**
 Swing drive 6.6 ltr **1.7 U.S. gal**
 Hydraulic tank 143 ltr **37.8 U.S. gal**



OPERATING WEIGHT (APPROXIMATE)

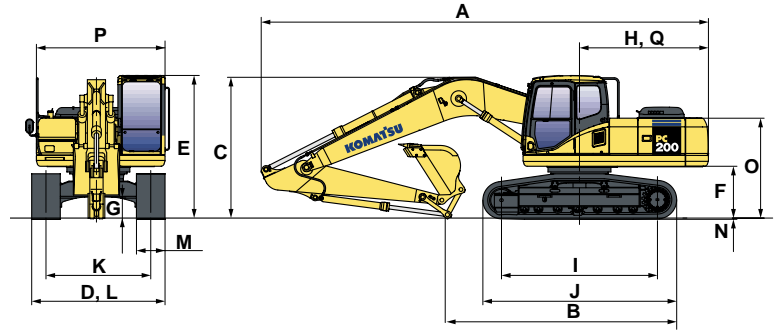
Operating weight including 5700 mm **18'8"** one-piece boom, 2925 mm **9'7"** arm, SAE heaped 0.80 m³ **1.05 yd³** backhoe bucket, rated capacity of lubricants, coolant, full fuel tank, operator, and standard equipment.

| Shoes | PC200-7 | |
|------------------------|------------------------------|---|
| | Operating Weight | Ground Pressure |
| 700 mm 28" | 19750 kg 43,540 lb | 39.2 kPa 0.40 kgf/cm ² 5.69 psi |
| 800 mm 31.5" | 20010 kg 44,110 lb | 34.3 kPa 0.35 kgf/cm ² 4.98 psi |

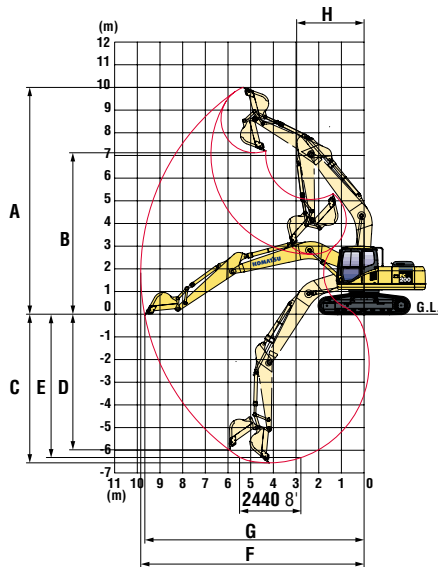


DIMENSIONS

| | | | |
|----------|------------------------------------|----------------------|-----------------------|
| | Arm Length | 2410 mm 7'11" | 2925 mm 9'7" |
| A | Overall length | 9495 mm 31'2" | 9425 mm 30'11" |
| B | Length on ground (transport): | 5700 mm 18'8" | 4825 mm 15'10" |
| C | Overall height (to top of boom) | 3190 mm 10'6" | 2970 mm 9'9" |
| D | Overall width | 3000 mm 9'10" | |
| E | Overall height (to top of cab) | 3000 mm 9'10" | |
| F | Ground clearance, counterweight | 1085 mm 3'7" | |
| G | Ground clearance (minimum) | 440 mm 1'5" | |
| H | Tail swing radius | 2750 mm 9'0" | |
| I | Track length on ground | 3270 mm 10'9" | |
| J | Track length | 4080 mm 13'5" | |
| K | Track gauge | 2200 mm 7'3" | |
| L | Width of crawler | 3000 mm 9'10" | |
| M | Shoe width | 800 mm 31.5" | |
| N | Grouser height | 26 mm 1.0" | |
| O | Machine cab height | 2095 mm 6'10" | |
| P | Machine cab width | 2710 mm 8'11" | |
| Q | Distance, swing center to rear end | 2710 mm 8'11" | |



WORKING RANGE



| | | | |
|-------------------|--|---------------------------------------|---------------------------------------|
| | Arm | 2410 mm 7'11" | 2925 mm 9'7" |
| A | Max. digging height | 9800 mm 32'2" | 10000 mm 32'10" |
| B | Max. dumping height | 6890 mm 22'7" | 7110 mm 23'4" |
| C | Max. digging depth | 6095 mm 20'0" | 6620 mm 21'9" |
| D | Max. vertical wall digging depth | 5430 mm 17'10" | 5980 mm 19'7" |
| E | Max. digging depth of cut for 8' level | 5780 mm 19'0" | 6370 mm 20'11" |
| F | Max. digging reach | 9380 mm 30'9" | 9875 mm 32'5" |
| G | Max. digging reach at ground level | 9190 mm 30'2" | 9700 mm 31'10" |
| H | Min. swing radius | 3090 mm 10'2" | 3040 mm 10'0" |
| SAE rating | Bucket digging force at power max. | 138 kN 14100 kgf/ 31,080 lb | 138 kN 14100 kgf/ 31,080 lb |
| | Arm crowd force at power max. | 124 kN 12600 kgf/ 27,780 lb | 101 kN 10300 kgf/ 22,710 lb |
| ISO rating | Bucket digging force at power max. | 149 kN 15200 kgf/ 33,510 lb | 149 kN 15200 kgf/ 33,510 lb |
| | Arm crowd force at power max. | 127 kN 13000 kgf/ 28,660 lb | 108 kN 11000 kgf/ 24,250 lb |



STANDARD EQUIPMENT

- Air conditioner with defroster
- Alternator, 50 Ampere, 24V
- Auto-Decel
- Automatic deaeration system for fuel line
- Automatic engine warm-up system
- Batteries, large capacity
- Boom and arm holding valve
- Cab
- Counterweight
- Dry type air cleaner, double element
- Electric horn
- Engine, Komatsu SAA6D102E-2
- Engine overheat prevention system
- Fan guard structure
- Hydraulic track adjusters (each side)
- Multi-function color monitor
- Power maximizing system
- PPC hydraulic control system
- Radiator and oil cooler dustproof net
- Rearview mirror, RH, LH
- Seat belt, retractable
- Seat, suspension
- Service valve
- Shoes, triple grouser: 800 mm **31.5"**
- Starting motor, 4.5 kW/24V x 1
- Track guiding guard, center section
- Travel alarm
- Working light, 2 (boom and RH)
- Working mode selection system



OPTIONAL EQUIPMENT

- Arms
 - 2925 mm **9'7"** arm assembly
 - 2925 mm **9'7"** HD arm assembly w/ piping
 - 2410 mm **7'11"** arm assembly
- Boom
 - 5700 mm **18'8"** boom
 - 5700 mm **18'8"** HD boom with piping
- Cab front and top guards
- Converter, 12V
- High Ambient Temperature Spec.
- Rain visor
- Shoes, triple grouser: 700 mm **28"**
- Sun visor
- Track frame undercover
- Track roller guards (full length)